



**The largest share of our property portfolio is spread equally between Pafos and Limassol. These two burgeoning cities account for 86% of high-value real estate investments in Cyprus.**



# Concept Oriented Lifestyle Destinations

NEO

ONE

MINTHIS



NEO, Limassol



ONE, Limassol



MINTHIS, Pafos



A black and white photograph of a person's profile, facing right. The person's face is partially obscured by a large, textured, dark object that appears to be a piece of crumpled paper or fabric. The word "ONE" is overlaid in large, white, sans-serif capital letters across the center of the image. The background is dark and out of focus.

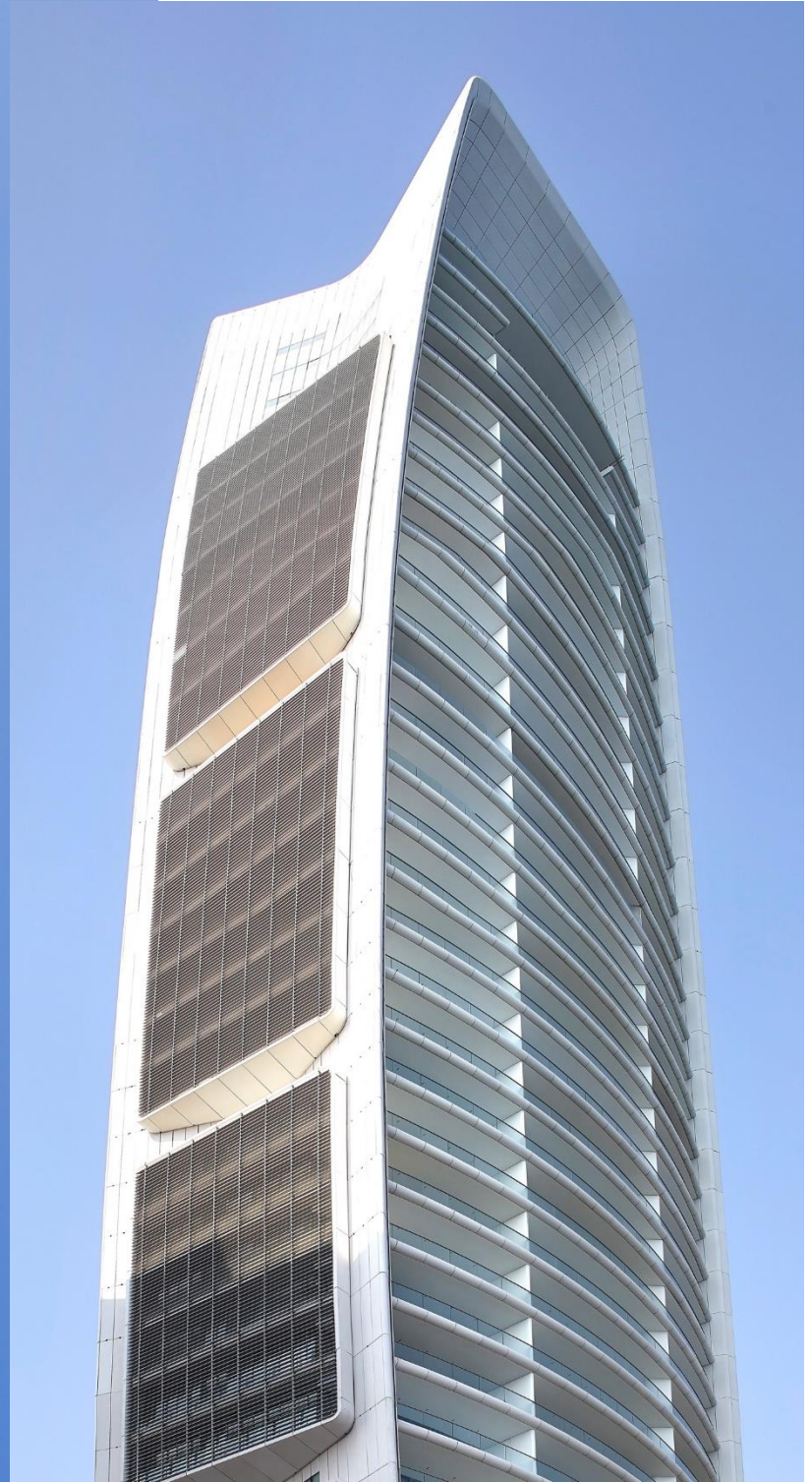
# ONE

ICONIC ADDRESS

































ENTRANCE





ENTRANCE





LOUNGE









EXCLUSIVE FACILITIES



# ONE

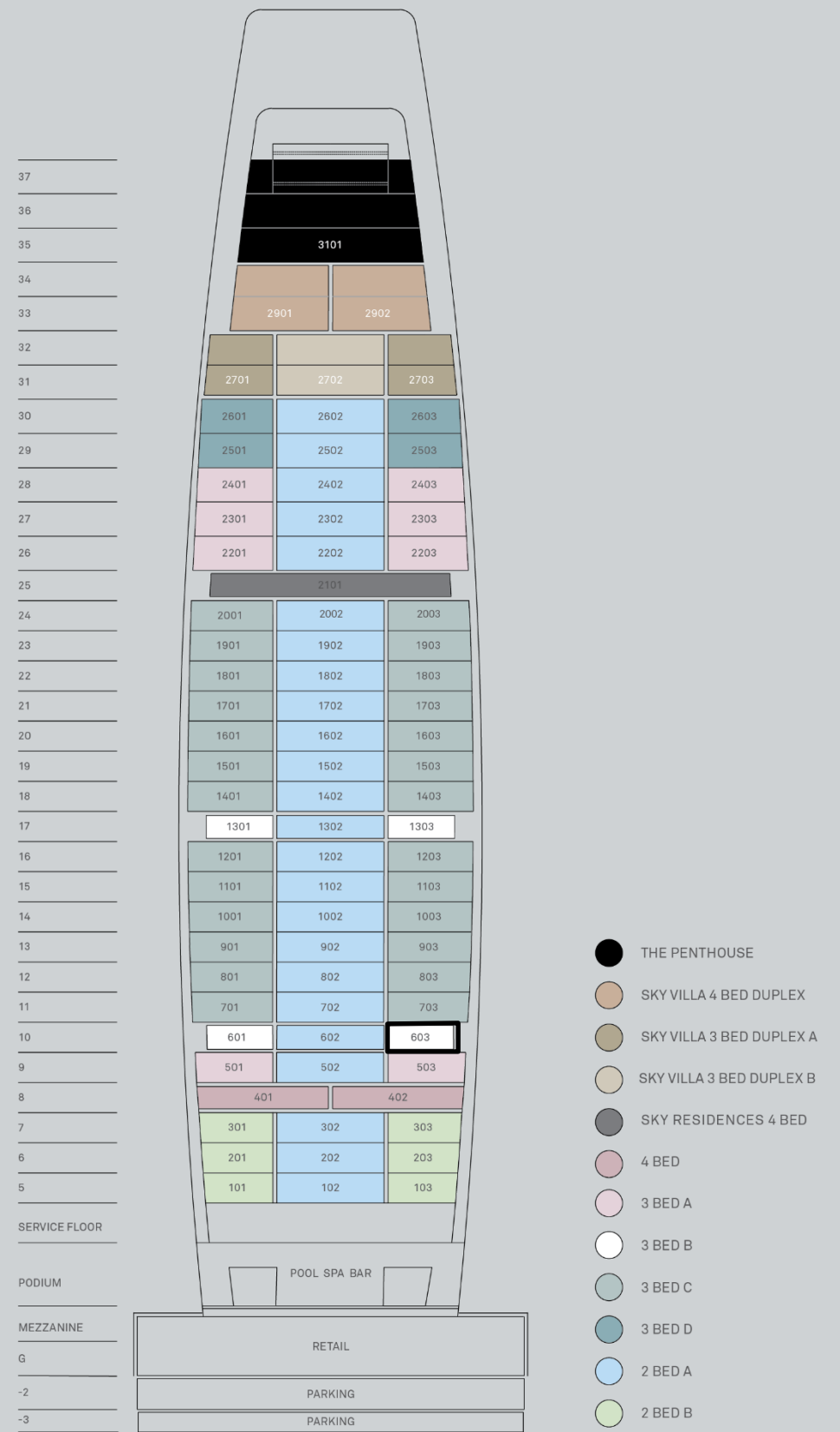
## RESIDENCE

THE NEW DEFINITION OF LUXURY

ONE is unique. It marks the heart of Limassol. It demonstrates the potential of architecture and design. It marries the sanctuary of home with the spirit of a remarkable hotel. It connects with nature and imbues life with light and space. As an address, an asset, a city retreat and a lifestyle choice, ONE introduces the Mediterranean to a new definition of luxury.



# ONE





# APARTMENT 603

3 BEDROOM  
2 BATHROOM  
COVERED AREA  
COVERED VERANDA  
PARKING  
STORE

133.50m<sup>2</sup>  
29.15m<sup>2</sup>

TOTAL COVERED AREA  
(Inc. Covered Veranda)

162.65m<sup>2</sup>























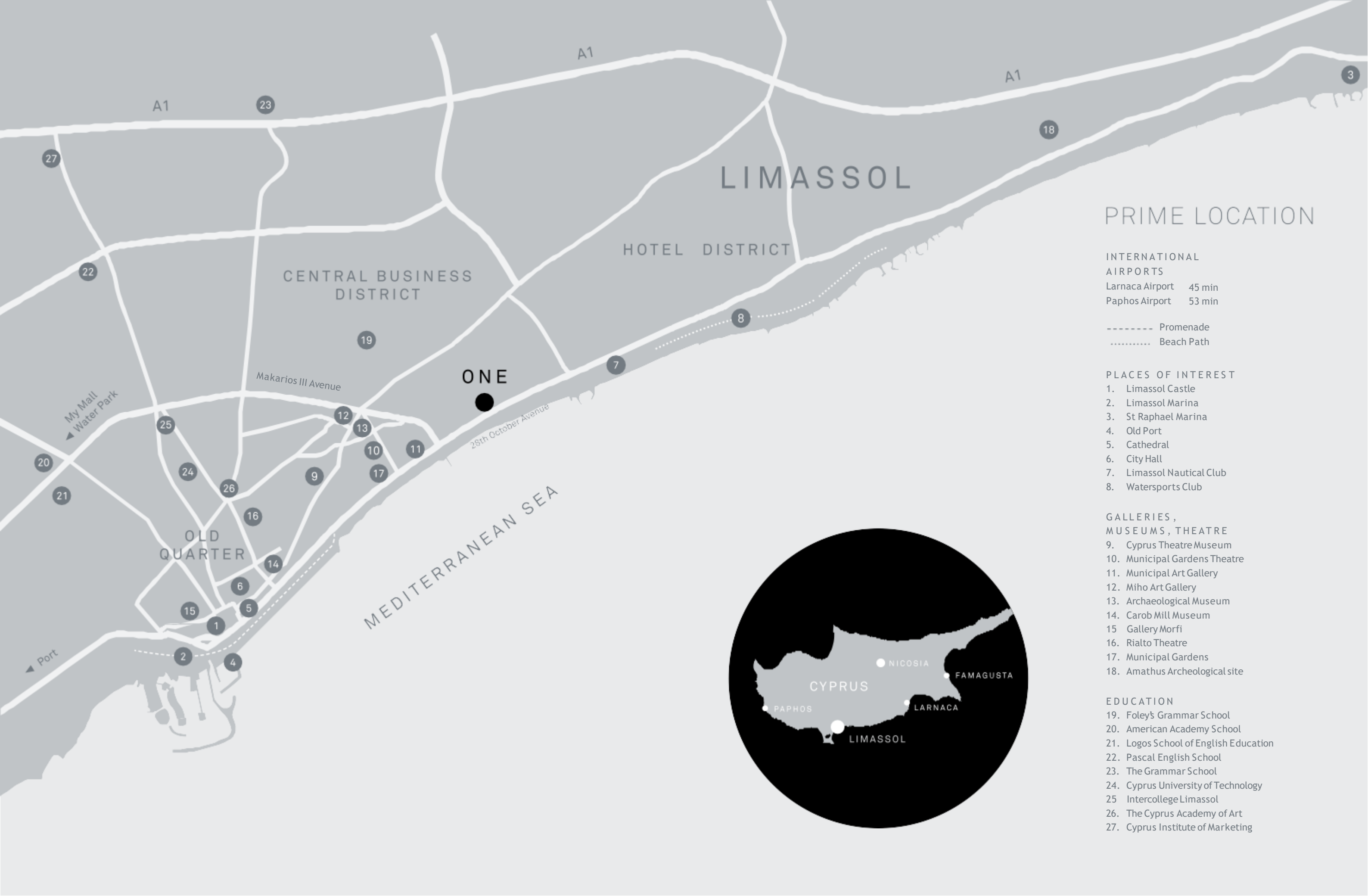












# LIMASSOL

## PRIME LOCATION

### INTERNATIONAL AIRPORTS

- Larnaca Airport 45 min
- Paphos Airport 53 min

- Promenade
- ..... Beach Path

### PLACES OF INTEREST

1. Limassol Castle
2. Limassol Marina
3. St Raphael Marina
4. Old Port
5. Cathedral
6. City Hall
7. Limassol Nautical Club
8. Watersports Club

### GALLERIES, MUSEUMS, THEATRE

9. Cyprus Theatre Museum
10. Municipal Gardens Theatre
11. Municipal Art Gallery
12. Miho Art Gallery
13. Archaeological Museum
14. Carob Mill Museum
15. Gallery Morfi
16. Rialto Theatre
17. Municipal Gardens
18. Amathus Archeological site

### EDUCATION

19. Foley's Grammar School
20. American Academy School
21. Logos School of English Education
22. Pascal English School
23. The Grammar School
24. Cyprus University of Technology
25. Intercollege Limassol
26. The Cyprus Academy of Art
27. Cyprus Institute of Marketing







## MASTERPLANNER

### ATKINS

Atkins is a name that reverberates throughout the worlds of masterplanning, architecture, landscape and engineering. It is one of the world's largest consultancies, with distinctive public, private, urban and nature projects in its enviable portfolio, including Dubai's Burj Al Arab.

A blend of imagination, pragmatism and holism defines Atkins' approach but, as with ONE, there is no singular element that defines their output. Every solution is a unique response to a lucid vision.

The Atkins team has delivered a concept and a standard that positions ONE as Cyprus' finest residential experience.



## ARCHITECT

### WKK

WKK have taken Atkins' concept forward with peerless design detailing and thoughtful specifications. Their supervision of the entire project ensures that ONE is the purest manifestation of luxury.

Tom Wright, Hakim Khennouchi and Geku Kuruvilla George established WKK in London after working together at Atkins for many years. They are bound by their passion for meaningful design and a belief that, as a creative, one must always experiment, learn and grow.



## INTERIOR DESIGNER

### HBA

The interior design team responsible for the superlative style of ONE is HBA.

Since 1965, HBA has captured and artfully interpreted the essence of the discerning individual's expectations and preferences. Today, some of the world's most luxurious and intriguing hotels, residences and spas feature proudly in HBA's portfolio

The distinctive promise of ONE - to offer residents beautiful and meticulously planned space that combines the best of home and hotel - has been brought to vivid life by HBA.



## ENGINEERING

### BUROHAPPOLD

Engineering consultancy BuroHappold has dedicated its best minds to developing ONE as a living, breathing part of Limassol.

For 40 years, BuroHappold has created living strategies that bridge the gap between science and society. Technical expertise is complemented by innovation, a holistic approach to planning and a passion for the future of the planet.

Their wealth of experience translates into stunning buildings that reverberate within their environment and deliver long-term value. In ONE, BuroHappold's ability to realise cutting-edge yet integrated engineering solutions is showcased perfectly.



